

Trafalgar

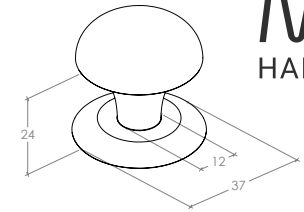
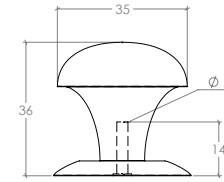
A timeless classic, reinvented. Featuring sophisticated curves and exquisite finishes, this range is manufactured with meticulous attention to fine detail.



STYLES	Knob: TRRK035 Bow Handle: TRBH096 Cup Pull: TRCP064
--------	---

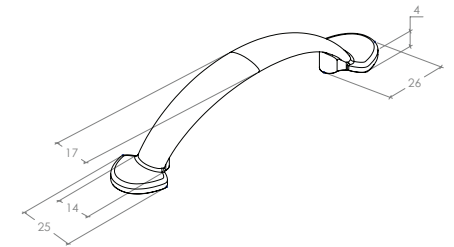
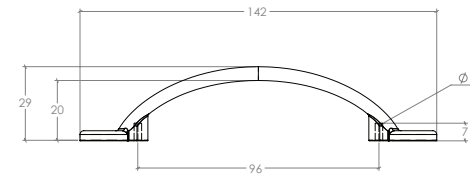
FINISHES	<div style="display: flex; gap: 10px;"> <div style="display: flex; align-items: center;"> <div style="width: 15px; height: 15px; background-color: #444; margin-right: 5px;"></div> Pewter (PW) </div> <div style="display: flex; align-items: center;"> <div style="width: 15px; height: 15px; background-color: #c8a24d; margin-right: 5px;"></div> Bronze (BNZ) </div> <div style="display: flex; align-items: center;"> <div style="width: 15px; height: 15px; background-color: #ccc; margin-right: 5px;"></div> Polished Nickel (PN) </div> </div>
----------	---

Knob

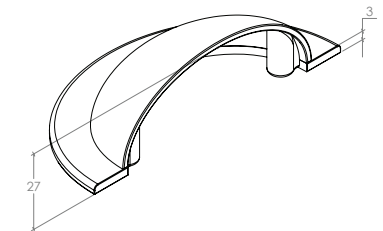
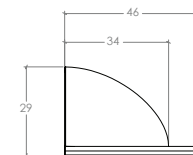
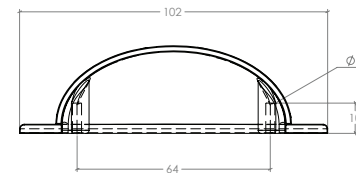


**MO
MO
HANDLES**

Bow Handle



Cup Pull



Part Number	Hole Centre	Overall Length	Projection
TRRK035	-	37Ø	36
TRBH096	96	142	29
TRCP064	64	102	29